

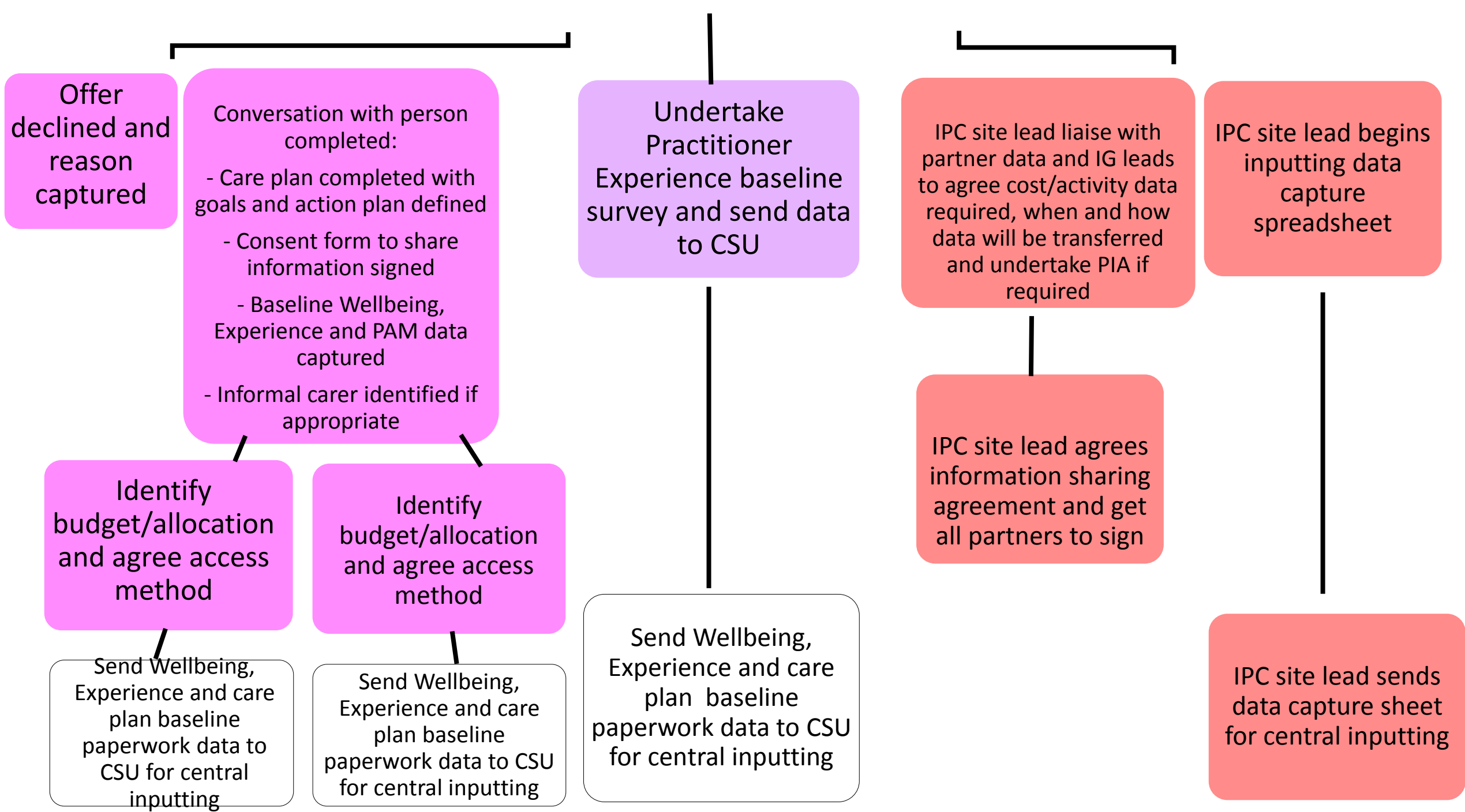
Pre-IPC Intervention

Agree which IPC cohort you are working with

Define and document any sub-selection criteria

Identify 5-10 people to work with

Approach person to offer IPC
conversation/phone/
letter



Review - 3
Months

University of
Plymouth get
practitioners
together for
facilitated learning
session and case
study capture

CSU sends
pseudonymisation
database to each
provider in a site
with data
specification

Site lead and team
interviewed to
capture learning
and lessons

**Experiential/Early
evaluation**

from conversation captured
at the learning event and
practitioner case studies

6 month check on
financial impact

IPC site lead sends data
capture sheet for
central inputting

Review - 6 Months

Undertake PERSON'S 6 month:

- Care plan review
- Wellbeing
- Experience
- PAM
- Capture case study
- POET administered

Undertake CARERS 6 month:

- Wellbeing
- Experience
- Capture case study

Send paperwork data to CSU for central inputting

Send paperwork data to CSU for central inputting

6 month/Intermediate Evaluation carried out by University of Plymouth analysing all data and providing regional report

6 month/Intermediate Evaluation carried out by University of Plymouth analysing all data and providing regional report

Undertake 2nd Practitioners survey and send to CSU for central inputting

6 month/Intermediate Evaluation carried out by University of Plymouth analysing all data and providing regional report

CSU sends pseudonymisation database to each provider in a site with data specification

Data provider sends pseudonymised data by secure email to CSU

CSU link pseudonymised data and send to AHSN and IPC finance lead for analysis

6 month/Intermediate Evaluation carried out by University of Plymouth analysing all data and providing regional report

IPC site lead and team interviewed to capture learning and lessons

Experiential/Early evaluation from site interviews

Review - 12 Months

Send out
Person's POET
Questionnaire

Send out
Carers POET
questionnaire

**Final 12 month
evaluation** carried
out by University
of Plymouth

**Final 12 month
evaluation** carried
out by University
of Plymouth

Key

- IPC site lead
- Operational practitioners
- Information/finance practitioners in site partner organisations
- IPC evaluation team