

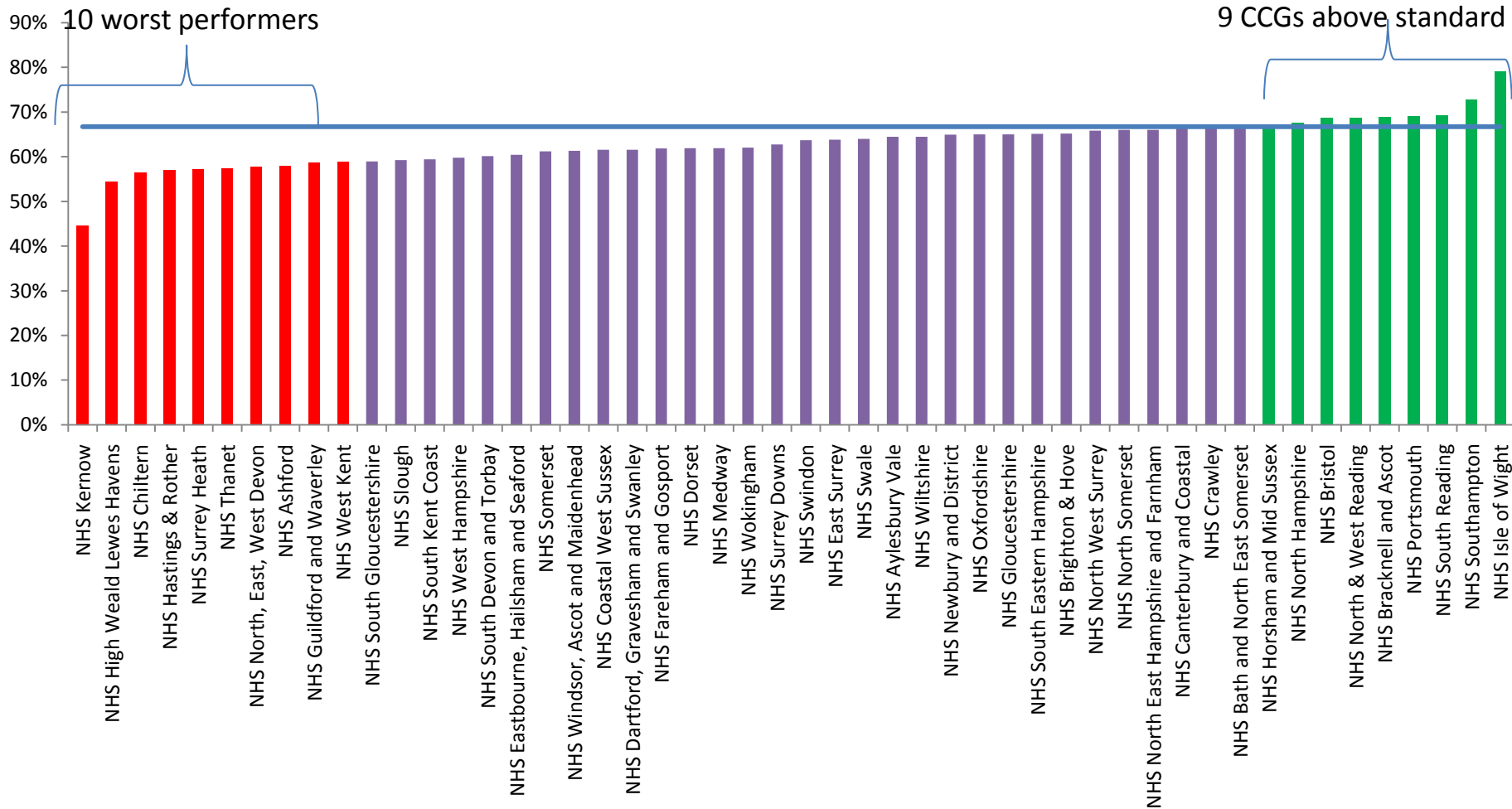
Dementia Aug 15

South Region

			Sum of Dementia Registers (ALL AGES) latest available	March 15 prevalence	Aug all ages	March all ages	Difference (March-Aug)	Sum of Dementia Registers (65 + only) latest available	Estimated Dementia Prevalence (65 + only) CFAS II	EAS1: Dementia Diagnosis Rate	Standard	Plan Diagnosis Rate	Gap to plan (Aug)
DCO Team	NHS Code	Name						NUMERATOR	DENOMINATOR	INDICATOR	66.7%		
South West	11N	NHS Kernow	3,831	8,681	44.1%	58.3%	-14.2%	3,720	8,344	44.6%	66.7%	67.0%	-22.4%
South East	99K	NHS High Weald Lewes Havens	1,404	2,544	55.2%	53.9%	1.3%	1,378	2,534	54.4%	66.7%	66.7%	-12.3%
South Central	10H	NHS Chiltern	2,323	4,321	53.8%	50.2%	3.6%	2,283	4,043	56.5%	66.7%	66.7%	-10.3%
South East	09P	NHS Hastings & Rother	1,875	3,459	54.2%	52.0%	2.3%	1,816	3,184	57.0%	66.7%	68.0%	-11.0%
South East	10C	NHS Surrey Heath	670	1,166	57.5%	59.0%	-1.5%	657	1,146	57.3%	66.7%	67.0%	-9.7%
South East	10E	NHS Thanet	1,230	2,335	52.7%	48.3%	4.4%	1,197	2,083	57.5%	66.7%	59.5%	-2.0%
South West	99P	NHS North, East, West Devon	7,762	14,303	54.3%	55.2%	-0.9%	7,592	13,111	57.9%	66.7%	67.2%	-9.3%
South East	09C	NHS Ashford	880	1,554	56.6%	52.7%	3.9%	852	1,471	57.9%	66.7%	66.7%	-8.8%
South East	09N	NHS Guildford and Waverley	1,608	3,062	52.5%	50.8%	1.7%	1,583	2,696	58.7%	66.7%	66.7%	-8.0%
South East	99J	NHS West Kent	3,554	6,364	55.8%	55.7%	0.1%	3,461	5,880	58.9%	66.7%	66.7%	-7.8%
South West	12A	NHS South Gloucestershire	1,899	3,165	60.0%	56.7%	3.3%	1,855	3,147	58.9%	66.7%	67.1%	-8.1%
South Central	10T	NHS Slough	547	879	62.2%	58.7%	3.5%	531	896	59.3%	66.7%	66.7%	-7.5%
South East	10A	NHS South Kent Coast	1,873	3,229	58.0%	55.9%	2.1%	1,820	3,064	59.4%	66.7%	66.7%	-7.3%
Wessex	11A	NHS West Hampshire	5,132	9,046	56.7%	56.3%	0.5%	5,039	8,426	59.8%	66.7%	67.0%	-7.2%
South West	99Q	NHS South Devon and Torbay	2,999	5,326	56.3%	61.2%	-4.8%	2,932	4,877	60.1%	66.7%	67.0%	-6.9%
South East	09F	NHS Eastbourne, Hailsham and Seaford	2,280	3,999	57.0%	55.4%	1.6%	2,223	3,678	60.4%	66.7%	58.7%	1.7%
South West	11X	NHS Somerset	5,305	8,938	59.4%	59.1%	0.2%	5,176	8,460	61.2%	66.7%	67.0%	-5.8%
South Central	11C	NHS Windsor, Ascot and Maidenhead	1,052	1,898	55.4%	56.0%	-0.6%	1,032	1,682	61.3%	66.7%	66.7%	-5.4%
South East	09G	NHS Coastal West Sussex	5,610	9,769	57.4%	55.6%	1.8%	5,476	8,898	61.5%	66.7%	67.0%	-5.5%
South East	09J	NHS Dartford, Gravesham and Swanley	1,765	3,083	57.2%	56.0%	1.2%	1,727	2,805	61.6%	66.7%	66.7%	-5.2%
Wessex	10K	NHS Fareham and Gosport	1,742	3,111	56.0%	58.2%	-2.2%	1,699	2,745	61.9%	66.7%	66.7%	-4.8%
Wessex	11J	NHS Dorset	8,134	13,308	61.1%	60.8%	0.3%	7,961	12,857	61.9%	66.7%	67.0%	-5.1%
South East	09W	NHS Medway	1,599	2,863	55.9%	55.0%	0.8%	1,547	2,498	61.9%	66.7%	70.6%	-8.7%
South Central	11D	NHS Wokingham	1,124	1,887	59.6%	58.1%	1.5%	1,086	1,750	62.1%	66.7%	66.7%	-4.7%
South East	99H	NHS Surrey Downs	2,573	4,307	59.7%	56.9%	2.8%	2,525	4,025	62.7%	66.7%	65.0%	-2.3%
South Central	12D	NHS Swindon	1,417	2,384	59.4%	59.1%	0.4%	1,370	2,151	63.7%	66.7%	67.0%	-3.3%
South East	09L	NHS East Surrey	1,461	2,450	59.6%	58.5%	1.1%	1,420	2,225	63.8%	66.7%	66.7%	-2.9%
South East	10D	NHS Swale	772	1,216	63.5%	59.8%	3.7%	749	1,170	64.0%	66.7%	66.7%	-2.7%
South Central	10Y	NHS Aylesbury Vale	1,499	2,485	60.3%	58.0%	2.3%	1,454	2,256	64.5%	66.7%	66.7%	-2.3%
South Central	99N	NHS Wiltshire	4,223	7,383	57.2%	56.4%	0.8%	4,142	6,422	64.5%	66.7%	69.8%	-5.3%
South Central	10M	NHS Newbury and District	774	1,357	57.0%	55.4%	1.6%	761	1,171	65.0%	66.7%	68.0%	-3.0%
South Central	10Q	NHS Oxfordshire	5,055	8,320	60.8%	57.8%	2.9%	4,966	7,641	65.0%	66.7%	67.0%	-2.0%
South Central	11M	NHS Gloucestershire	5,553	8,976	61.9%	59.9%	2.0%	5,414	8,326	65.0%	66.7%	59.8%	5.2%
Wessex	10V	NHS South Eastern Hampshire	2,115	3,483	60.7%	59.9%	0.9%	2,059	3,160	65.2%	66.7%	66.7%	-1.5%
South East	09D	NHS Brighton & Hove	1,762	2,877	61.2%	57.8%	3.5%	1,724	2,646	65.2%	66.7%	66.7%	-1.6%
South East	09Y	NHS North West Surrey	2,815	4,319	65.2%	63.5%	1.7%	2,766	4,201	65.8%	66.7%	67.2%	-1.4%
South West	11T	NHS North Somerset	2,198	3,866	56.9%	52.1%	4.8%	2,149	3,256	66.0%	66.7%	66.7%	-0.8%
Wessex	99M	NHS North East Hampshire and Farnham	1,545	2,545	60.7%	60.7%	0.0%	1,515	2,295	66.0%	66.7%	60.2%	5.8%
South East	09E	NHS Canterbury and Coastal	1,959	3,075	63.7%	63.5%	0.2%	1,884	2,840	66.3%	66.7%	66.7%	-0.4%
South East	09H	NHS Crawley	706	1,236	57.1%	57.1%	0.0%	684	1,030	66.4%	66.7%	58.5%	7.9%
South Central	11E	NHS Bath and North East Somerset	1,607	2,593	62.0%	59.8%	2.2%	1,576	2,364	66.7%	66.7%	69.3%	-2.7%
South East	09X	NHS Horsham and Mid Sussex	2,036	3,635	56.0%	54.3%	1.7%	2,007	2,991	67.1%	66.7%	66.8%	0.3%
Wessex	10J	NHS North Hampshire	1,610	2,588	62.2%	60.8%	1.4%	1,583	2,342	67.6%	66.7%	67.0%	0.6%
South West	11H	NHS Bristol	2,893	4,640	62.3%	60.6%	1.7%	2,808	4,086	68.7%	66.7%	66.7%	2.0%
South Central	10N	NHS North & West Reading	765	1,275	60.0%	54.2%	5.8%	753	1,095	68.7%	66.7%	67.2%	1.5%
South Central	10G	NHS Bracknell and Ascot	909	1,366	66.5%	66.2%	0.4%	881	1,277	69.0%	66.7%	64.0%	5.0%
Wessex	10R	NHS Portsmouth	1,419	2,305	61.6%	66.3%	-4.7%	1,387	2,005	69.2%	66.7%	67.8%	1.3%
South Central	10W	NHS South Reading	519	907	57.2%	53.5%	3.7%	508	733	69.3%	66.7%	58.5%	10.8%
Wessex	10X	NHS Southampton	1,681	2,620	64.2%	65.0%	-0.8%	1,642	2,256	72.8%	66.7%	68.7%	4.1%
Wessex	10L	NHS Isle of Wight	1,976	2,928	67.5%	66.9%	0.6%	1,940	2,454	79.1%	66.7%	87.2%	-8.2%

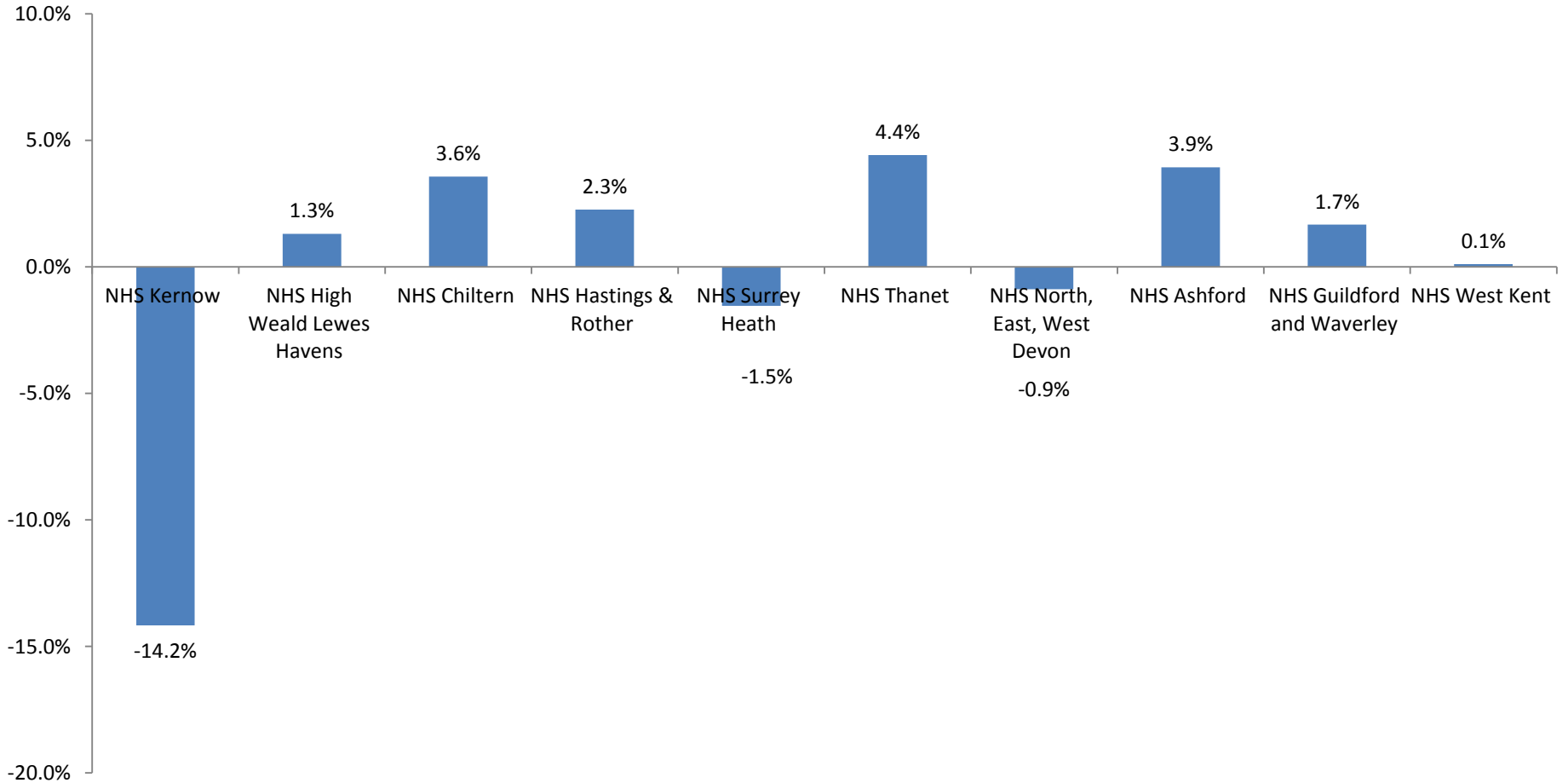
Dementia Diagnosis Rate (Aug 15)

Best and Worst performing CCGs in the South



Of the ten worst CCGs in the South, 1 is in South Central (Chiltern), 2 are in the South West (Kernow and NEW Devon) and the remaining 7 are in the South East. See the following slide for a closer look at the bottom ten performers. 10 CCGs met the standard with 9 above standard.

Bottom 10 CCGs



As yet we have no baseline performance data on the new 'age 65+' methodology (due to be published in late November).

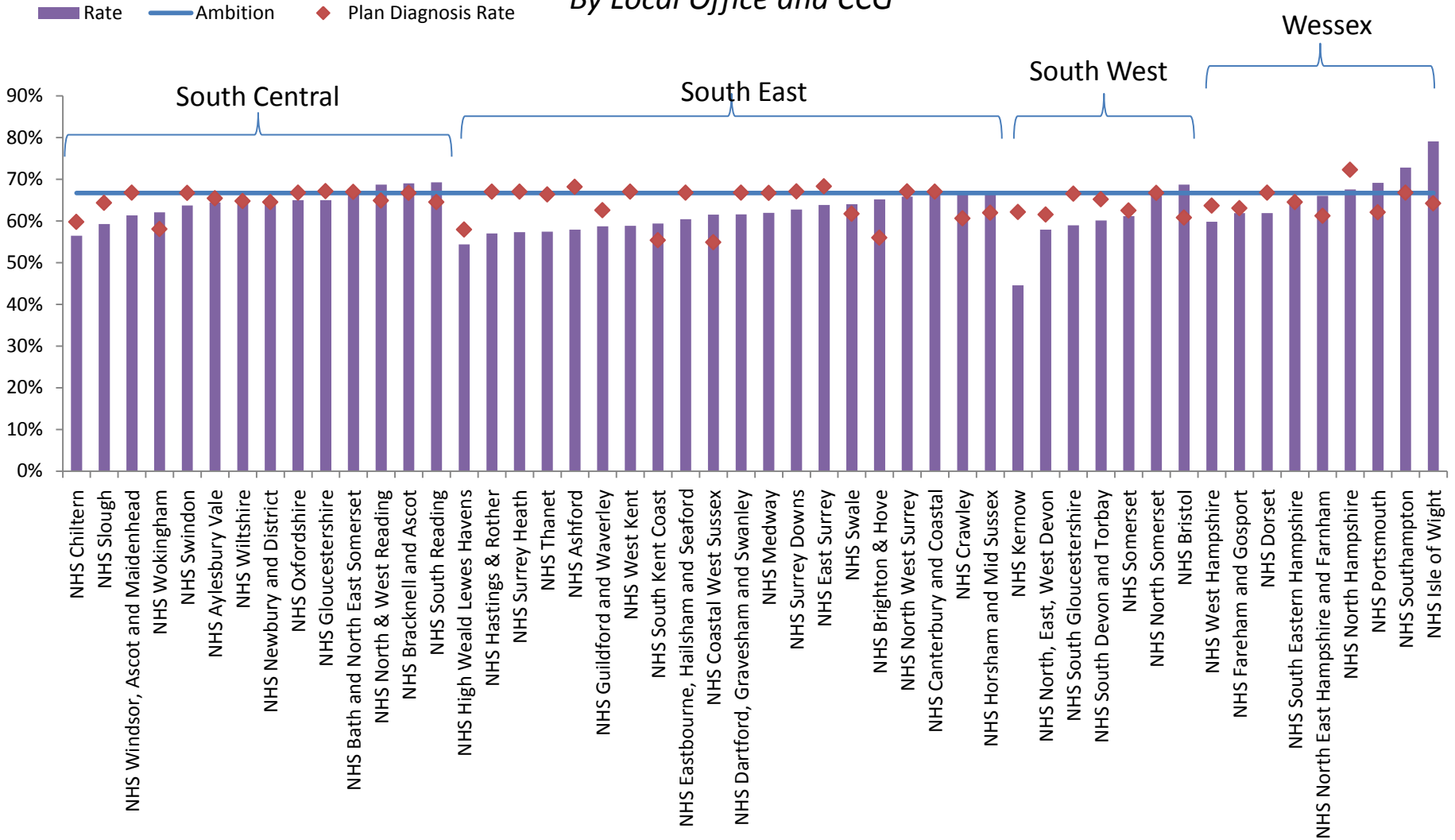
The chart above instead shows performance from April to August on the 'all ages' measure for the ten worst performing CCGs on the new measure to give an indication of direction of travel.

Seven have improved on their March 15 position. Thanet (4.4%) and Ashford (3.9%) were the most improved whereas Surrey Heath, Kernow and North, East, West Devon all saw a decline since March. This was particularly evident in Kernow (-14.2%). This indicates where CCGs may require closer attention.

The following slide shows CCG performance in the South against the national standard grouped by Local Office, alongside each CCG's planned diagnosis rate for 15/16.

Dementia Diagnosis Rate Aug 15

By Local Office and CCG



Only ten CCGs across the South met the national ambition diagnosis rate of 66.7%. Isle of Wight was the best CCG (79.1%) and Kernow was the worst (44.6%). Hence the variation across the South was 34.5 percentage points.

Local Office	Number of practices not submitting in Aug
South Central	26
Wessex	31
South West	40
South East	54

Practice Level Analysis

Isle of Wight CCG was the top performer on diagnosis rate (see earlier slide), but also had the largest proportion of practices not submitting data in August 15. Hence their figure should be taken with caution.

Proportion of Practices not submitting Aug 15 data
By CCG

